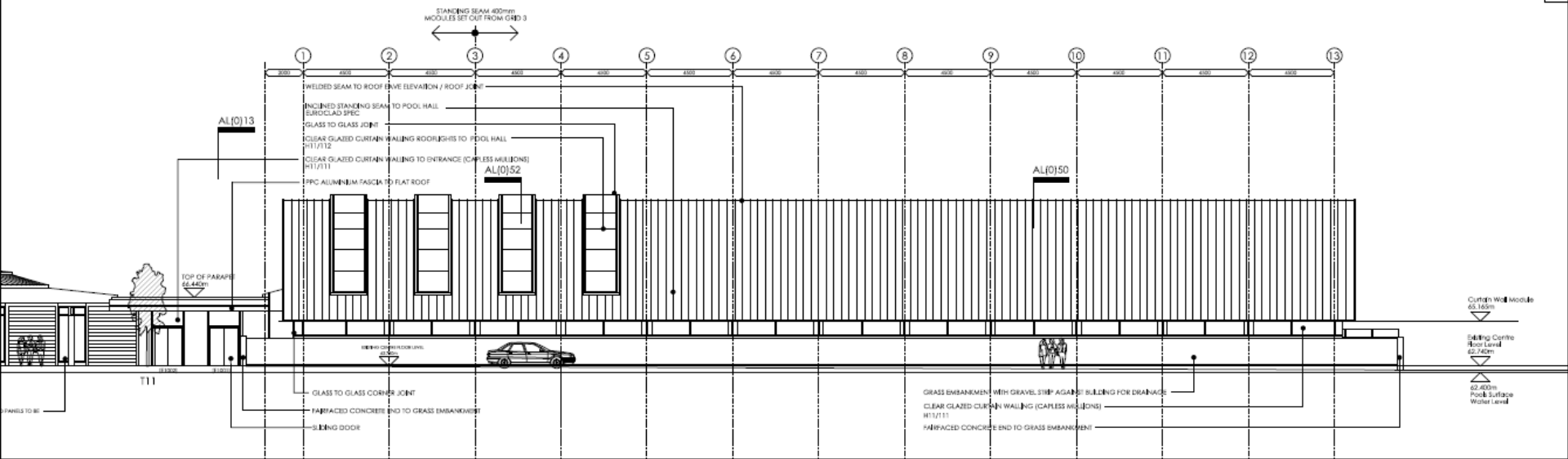


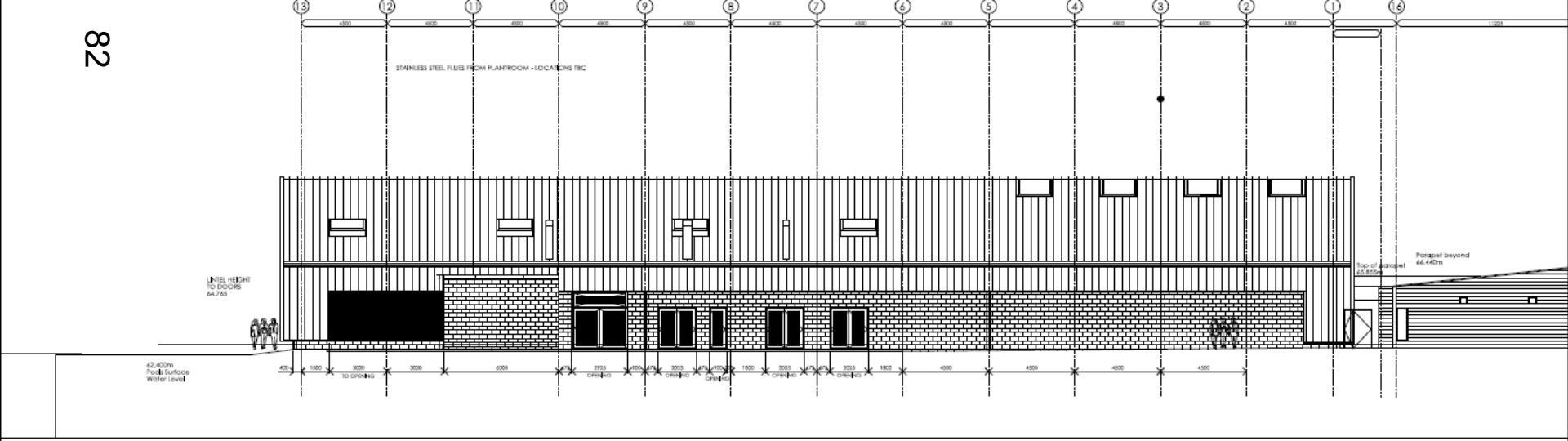
Welcome to the East Area Planning Committee

- This planning committee meeting is held in public, but it is not a public meeting.
- There will be opportunity for the public to address the committee on each application.
- If you wish to speak for or against a planning application, you will need to have either requested it in advance, or fill out and hand in one of the available speaker forms.
- Information on meeting protocol and conduct at committee is set out in the Code of Practice.
- You can find a copy of the Code of Practice in the committee agenda, just before the first planning application report.





AL(0)14 - South Elevation

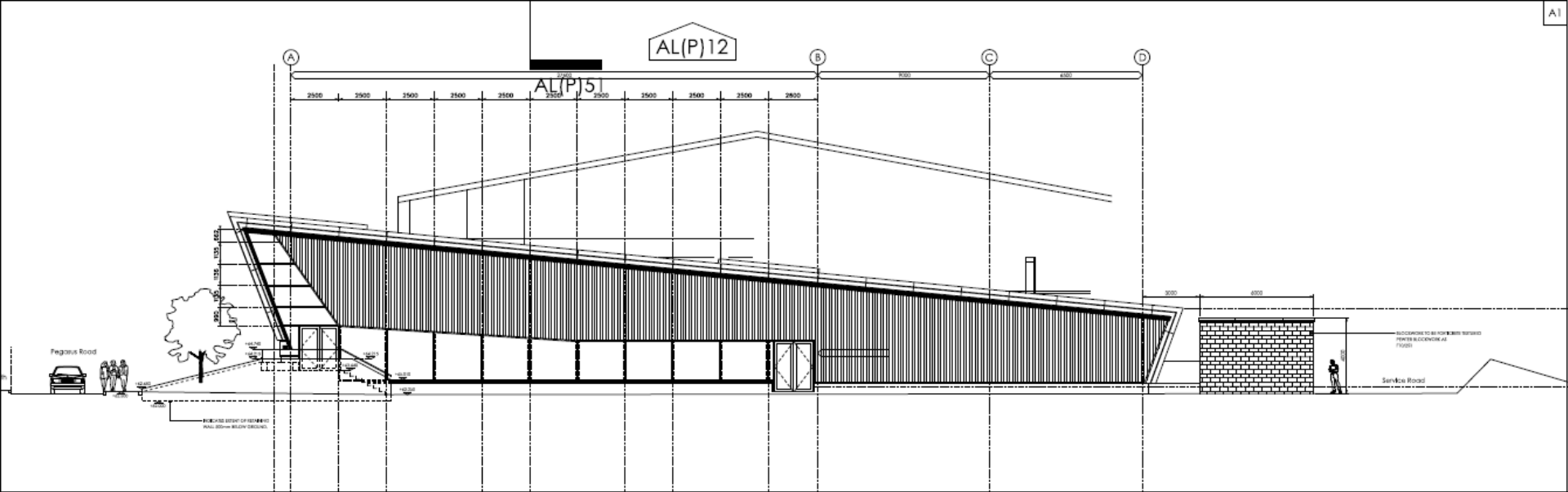


AL(0)15 - North Elevation

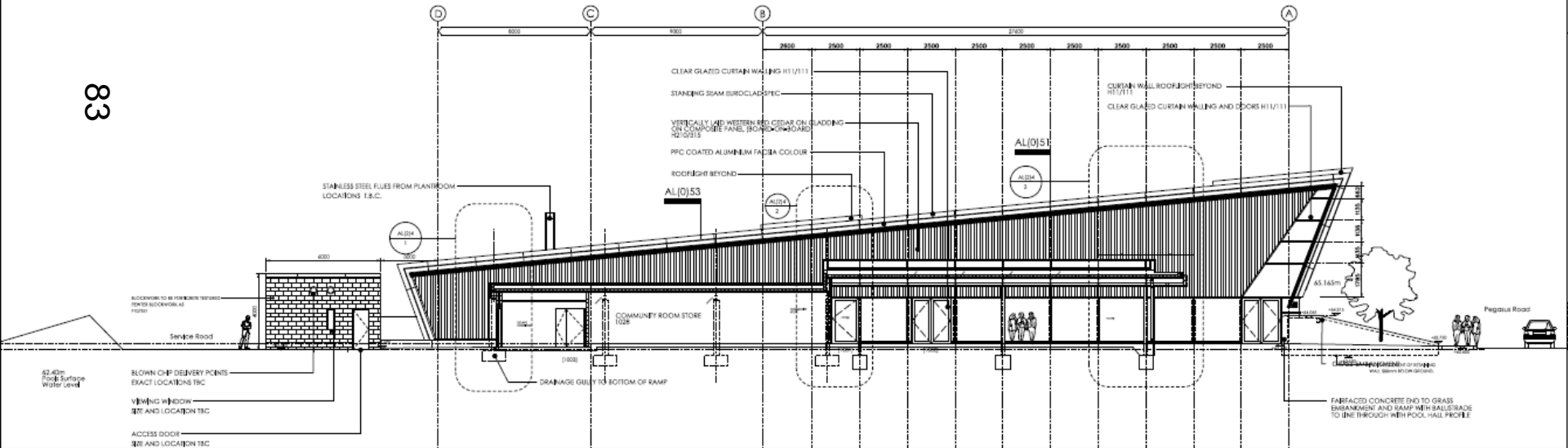
| Rev | Date | By/Checked | Description | Rev | Date | By/Checked | Description | Rev | Date | By/Checked | Description |
|-----|----------|------------|--|-----|----------|------------|--|-----|------|------------|-------------|
| A | 08.02.11 | | SPECIFICATIONS: DOOR NUMBERS ADDED, REFERENCED ADDED, SOUTH WINDOW LEVEL TO 62.400m TO STAGE | L | 14.02.11 | | CHANGE ELEVATION SOUTH TO POOL HALL REFERENCED TO (62.400m) (NOT UPDATED TO 62.400m) | | | | |
| B | 14.05.11 | | DRAWING UPDATED FOR STAGE IN ACCORDANCE WITH ALIGNED DEVELOPMENT | C | 04.02.13 | | CORRECTORY CHANGE: SPECIFICATION REFERENCES TO FACED BLOCKED REVEAL | | | | |
| C | 18.04.11 | | POOL SWL AND PLANTROOM DOOR THRESHOLD LEVELS AMENDED | D | 03.02.13 | | FRP ALUMINUM FASCIA TO FLAT ROOF | | | | |
| D | 07.02.13 | | UPDATED TO SLIP STREAM CHANGE OF LEVEL, STANDING SEAM MODULE CHANGED TO 400mm, WINDOW FINES ADDED TO POOL HALL TO COORDINATE WITH BLOCKWORK, EXTERNAL DOOR STORE ADDED | E | 14.02.14 | | ROOM FINES REFER TO CORNER FINES WITH ADDITIONAL FINES DRAWINGS | | | | |
| | | | | F | 07.02.14 | | EXTERNAL DOOR STORE ADDED | | | | |

| | | | | |
|--------------------------|--------------|--------------------------|--------------|---|
| CONSTRUCTION | | 2756 | AL(0)14-15 | K |
| OXFORD CSP | | FALLNERBROWNS ARCHITECTS | | |
| South & North Elevations | | | | |
| Date: Jan 2011 | Scale: 1:100 | Drawn: NJT | Checked: JPC | <small> INFORMATION: ARCHITECTS' RESPONSIBILITY IS LIMITED TO THE DESIGN AND CONSTRUCTION OF THE WORK SHOWN. </small> |

Proposed elevations



AL(0)16 - East Elevation



AL(0)17 - West Elevation

| Rev | Date | By | Check | Notes | Rev | Date | By | Check | Notes | Rev | Date | By | Check | Notes |
|-----|----------|----|-------|--|-----|----------|----|-------|--|-----|------|----|-------|-------|
| A | 08.20.11 | | | SPIC BOSS UPDATED, DOOR NUMBERS ADDED, SIGN BOARDS REVISED ADDED | 1 | 19.05.14 | | | CURTAIN WALL REVISED TO COORDINATE WITH EXISTING ROOFING, GRADE EMBANKMENT AND ROADWAY | | | | | |
| B | 14.03.11 | | | DRAWING UPDATES FOR STAIRS ACCORDING TO REVISED DATA, EMBANKMENT | 2 | 09.02.14 | | | CURTAIN WALL INDICATOR REMOVED, EXTERNAL STAIRS STORE ADDED | | | | | |
| C | 18.06.11 | | | SPECIFICATIONS AMENDED | | | | | | | | | | |
| D | 10.02.13 | | | UPDATES TO ELEVATION'S USURANCE OF CIVIL, ROOF ACCESS HATCH AND ROOF ACCESS LADDER DETAILS | | | | | | | | | | |
| E | 14.02.13 | | | NOTHING UPLOADED TO BIM CONTRACTOR COMMENTS | | | | | | | | | | |

This page is intentionally left blank